



## Coffee Brief

**Date: 6/15/2022**

### Preparedness Levels & Alaska Fire Activity

Alaska	3
National	2

Light Initial Attack Activity New Fires and Acres: 3 Fires for .9 Acres
--

There are currently 8 staffed fires with 457 personnel. Yesterday's large fire growth was 53,129 acres.

*Sources: National and AICC Situation Report*

### Resources

#### **AVIATION:**

5 jump ships with ~ 36 jumpers, 58 jumpers committed.

**CREWS:**

<b>Incident Name</b>	<b>Name</b>	<b>Assignment Status</b>	<b>Qualification</b>
Aghaluk Mountain	Union IHC	Assigned	CRW1
Aghaluk Mountain	Pioneer Peak IHC	Assigned	CRW1
Aghaluk Mountain	Winema IHC	At-Incident	CRW1
Batztoa Lake	SES - K-River 1	Assigned	CRW2
Bolgen Creek	Entiat IHC	At-Incident	CRW1
Bolgen Creek	CATG	At-Incident	CRW2
East Fork	Rogue River IHC	At-Incident	CRW1
East Fork	Zig Zag IHC	At-Incident	CRW1
East Fork	Chena	At-Incident	CR2I
East Fork	North Star	At-Incident	CRW2
East Fork	Capstone - 1	At-Incident	CRW2
East Fork	Big River	Assigned	CRW2
East Fork	Mooseheart	Assigned	CRW2
Hog Butte	Midnight Sun	At-Incident	CR2I
Kichatna	White Mountain	At-Incident	CR2I
Kichatna	Gannett Glacier	At-Incident	CR2I
Submarine Creek	Yukon	At-Incident	CRW2

## MISCELLANEOUS:

5 IHC's (Vale – Hughes incident, La Grande – Stage at Ft. WW - AFS, Redmond – Stage at UAF Mob Ctr, Prineville - Stage at UAF Mob Ctr, and Wolf Creek - Stage at UAF Mob Ctr) from the lower 48 are scheduled to arrive at FBK today at 1500 hours on Jet #2. AK IMT2 Black Team is currently in command of the Lime Complex. AK IMT2 Green Team is currently in command of the East Fork incident.

*Source: IROC Reports*

---

### Weather Summary

Another quieter day is expected for Southwest today, though some breezy southerly winds are expected along the Yukon Delta. Temperatures will start to warm a bit, but will remain on the cooler side and RHs will be above 40 percent in most areas. This will help to keep fire activity a bit moderated in Southwest for another day or so.

Meanwhile, the eastern half of the state is in a significant warming trend, with temperatures into the 70s with a few 80s for much of the central and eastern Interior through the next week. With this somewhat disorganized ridge that sets up over the east, instability will abound. Thus the chance for afternoon showers and thunderstorms will be increasing dramatically over the next few days, with active lightning days through at least Thursday. Today, wet thunderstorms are expected in parts of South Central, up through the Alaska Range and into the north central Interior.

Smoke is an issue for the western half of the state, and even as far east as Fairbanks smoke is making for poor air quality. At this time, the pattern will continue to bring smoke into these areas.

*Source: Alaska 7-Day Outlook*

---

### Fuels/Fire Potential

Fine fuels remain mostly moderated in the Panhandle, while Copper River Basin is beginning to rebound. Much of South Central has received little rain in the last few days, and many stations are showing that fine fuels are burnable. Mid and deeper duff layers there have continued to dry over the last week, despite the cooler and damper weather.

The most concerning fuels are in the central and eastern Interior. Portions of western Alaska received moisture, dampening surface fuels but the Y-K Delta is still dry. ISIs have increased in the northeast Interior and around Fairbanks.

The deeper duff layers continue to dry in the Interior, Southwest, and South Central. Many stations in these areas now have Buildup Index (BUI) values above the critical threshold of 80 and well over 100, indicating that the deeper layers will contribute to wildfire behavior and lightning holdover potential. Many fires will be increasingly resistant to control. Three weeks of drying has made subsurface fuels across the Interior very flammable as we approach the solstice.

Source: Alaska 7-Day Outlook

---

Fuels Status [Alaska Fire and Fuels Map](#)

***A Fuels and Fire Behavior Advisory has been issued for Alaska.***

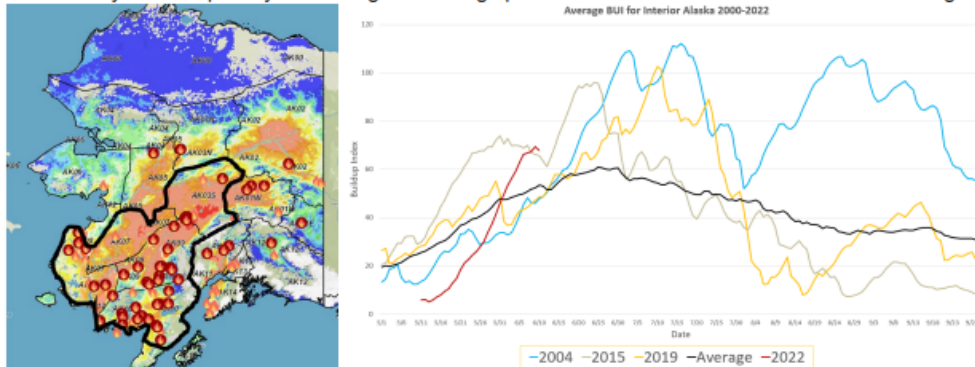
## Fuels and Fire Behavior Advisory Southwest and Central Interior Alaska

Valid: June 12 – June 25, 2022

**Subject:** Exceptional landscape flammability and widespread ongoing large fire growth.

**Discussion:** The Buildup Index (BUI) is the best indicator of seasonal severity and overall flammability of fuels in Alaska. It represents deeper drying in the duff layers and greater fuel availability. Large fire growth occurs from mid-June to mid-July surrounding the summer solstice when long days and rapid drying can produce elevated BUI levels. Southwest Alaska normally experiences shorter periods of high flammability as they are prone to intermittent rain due to marine influences. Beginning in the middle of May, southwest Alaska has experienced continued hot, dry, and windy conditions, drying out fuels, retarding green-up and producing significant large fire growth. Many fires in southwest Alaska have experienced exceptionally large fire growth over the last week, which is unusual for the area.

**Difference from normal conditions:** The attached graph shows the current 2022 BUI trend for the Interior of Alaska compared to other busy fire seasons. 2022 has been above average BUI since May 31, and higher than 2015 levels since June 6. Southwest Alaska has already experienced abnormally large fire growth for this time of year. Multiple days of wetting rain adding up to more than one inch will be needed for lasting relief.



### Concerns to Firefighters and the Public:

- Spruce stands are extremely flammable, will ignite readily, exhibit rates of spread more than one mile per hour, torch, and spot prolifically up to ¼ mile or more, and exhibit intense crown fire behavior.
- Temperatures above 80 degrees and RH below 30% are important thresholds for rapid spread and crown fire behavior.
- Green fuels are stressed and encouraging spread into riparian areas and less flammable hardwood forests.

### Mitigation Measures:

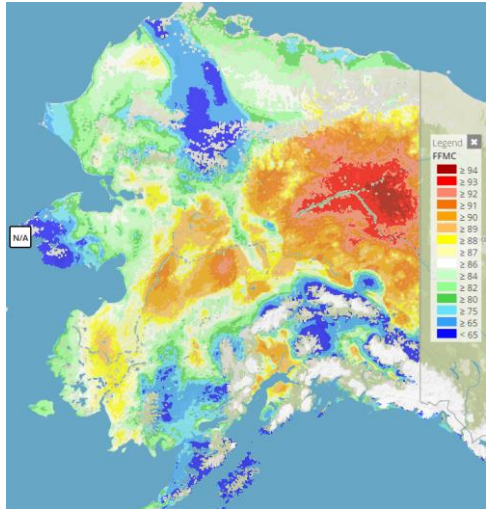
- Ensure that you can recognize hazardous fuel types including tundra that is exceptionally dry.
- Understand the triggers and thresholds for problem fire behavior.
- Monitor forecasts and indices to anticipate areas of increased flammability and extreme fire behavior.
- Maintain clear communications when working around active fires.

**Area of Concern:** Southwest Alaska, and the central Interior. Conditions over the next few weeks may spread to include a wider portion of Alaska.

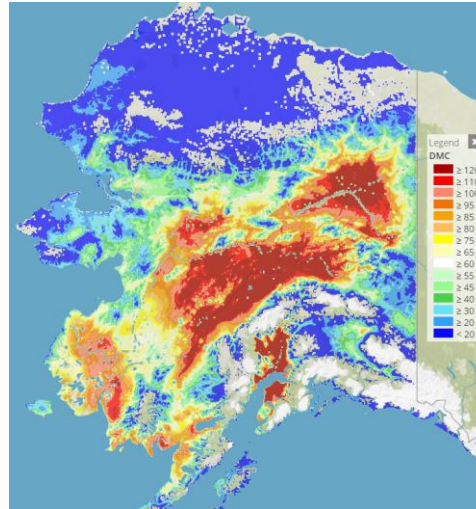
**Issued By:** Alaska Interagency Coordination Center Predictive Services

Click on the following images for direct links to the maps.

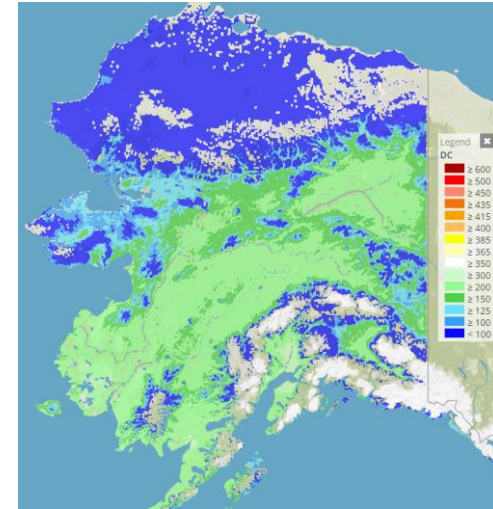
FFMC



DMC



DC



For additional fuels information visit <https://akff.mesowest.org/>

Sources: AICC Predictive Services – Fuels/Fire Danger web page, Alaska Fire & Fuels web page

## Prioritized Incident Details

This information will be available after the next AMAC meeting.

Source: AMAC Incident Prioritization List, ICS-209s

The Coffee Brief is posted at PLs 4 and 5 only.

